



Tool Data eXplorer

Equipment Abnormality Predictive
Monitoring Software

Features of TDX

DURA SYSTEMS CORPORATION

2022/3/4

Features of TDX

Real-time equipment monitoring and predictive monitoring

CSV data reading, visualization, data storage and analysis

Application of monitoring model according to equipment characteristics

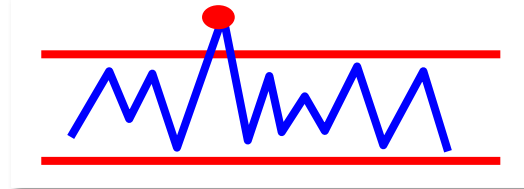
Automatic generation and optimization of monitoring threshold, monitoring result notification

System construction according to scale, from 1 to several thousand equipment

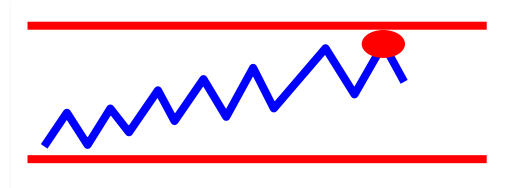
Monitoring Operation status monitor

Real-time equipment monitoring and predictive monitoring

Real-time monitoring:
For the latest processing, the threshold deviation of the monitoring value is detected and an error is issued.



Predictive monitoring:
It goes back to the past processing, predicts anomalies from deviations, variations, and tendencies of monitored values, and issues an error in advance.



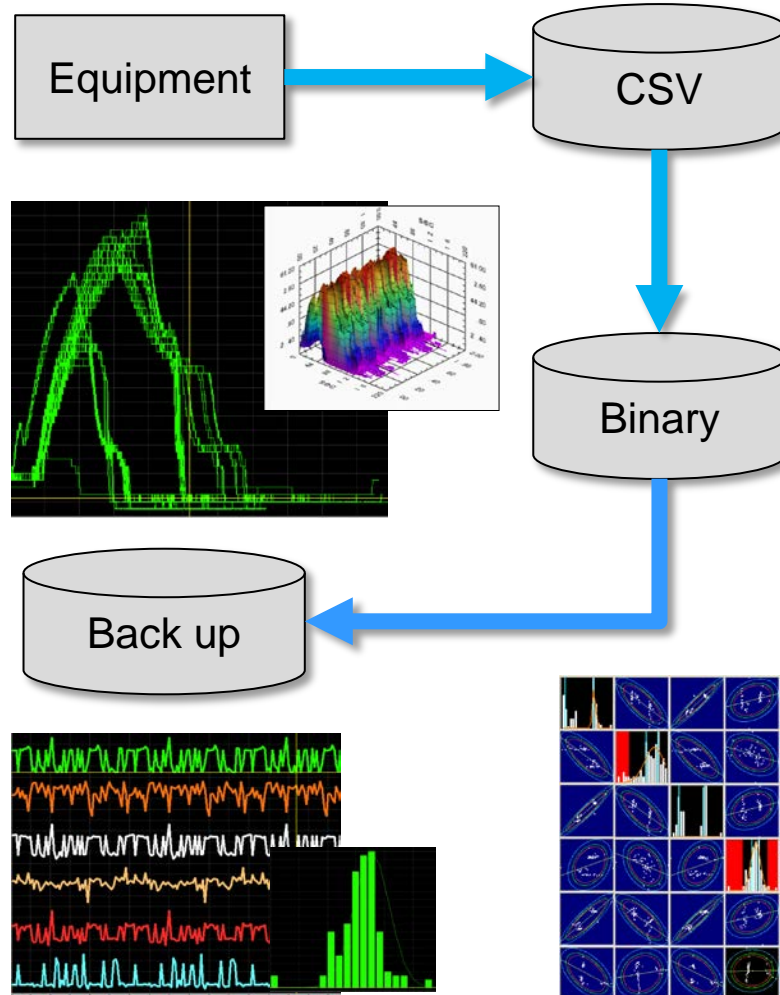
CSV data reading, visualization, data storage and analysis

CSV data reading:
Always read CSV files input
by FTP etc.

Visualization:
Binarization of CSV file and
cutout display of optimum
waveform.

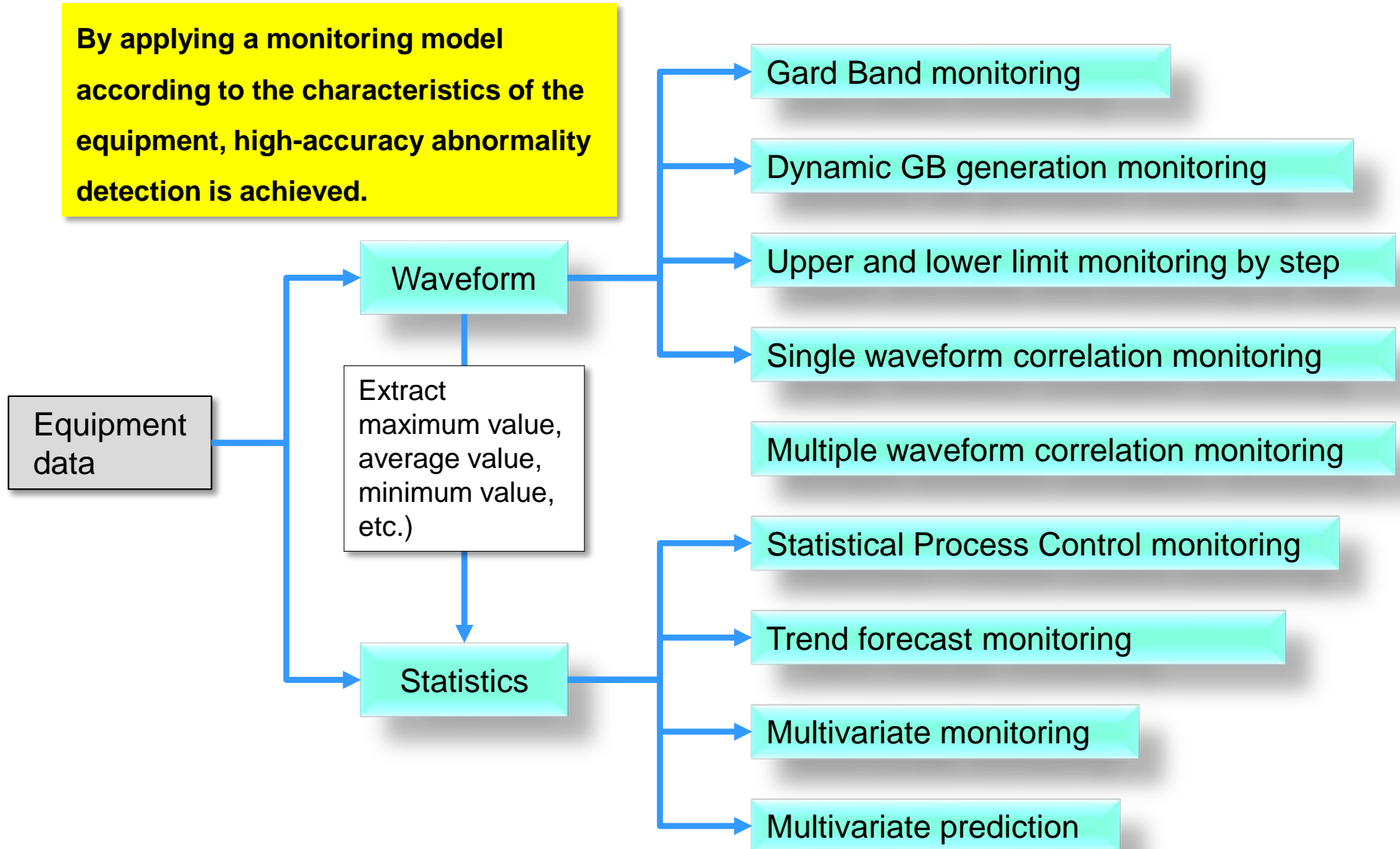
Data accumulation:
Saving and backing up binary
files.

Analysis:
Analysis of waveforms,
statistics and multivariates.



Application of monitoring model according to equipment characteristics

By applying a monitoring model according to the characteristics of the equipment, high-accuracy abnormality detection is achieved.

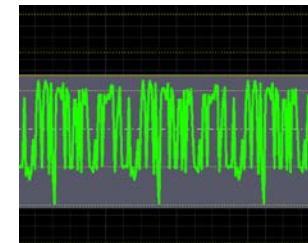
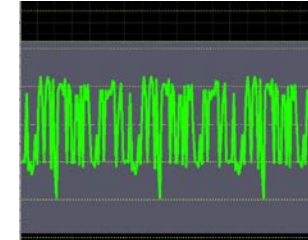
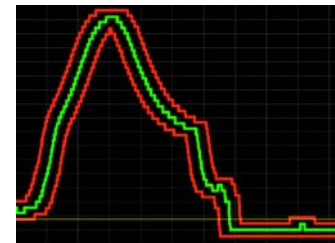
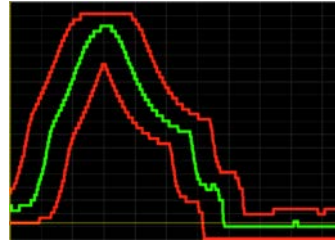


Automatic generation and optimization of monitoring threshold, monitoring result notification

Automatic generation of monitoring threshold:
Automatic threshold generation and automatic start of monitoring.

Monitoring threshold optimization:
Optimization of monitoring threshold by reference to past intervals.

Monitoring result notification:
Display monitoring results, notify, write files.



Notification email with image

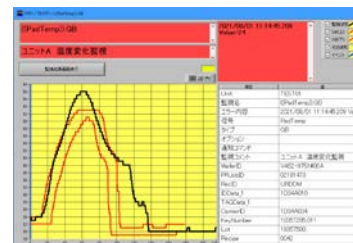
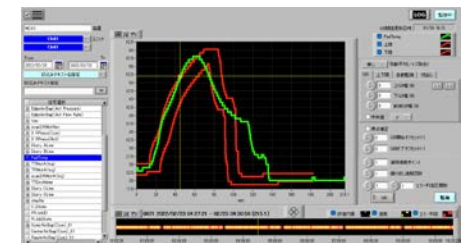
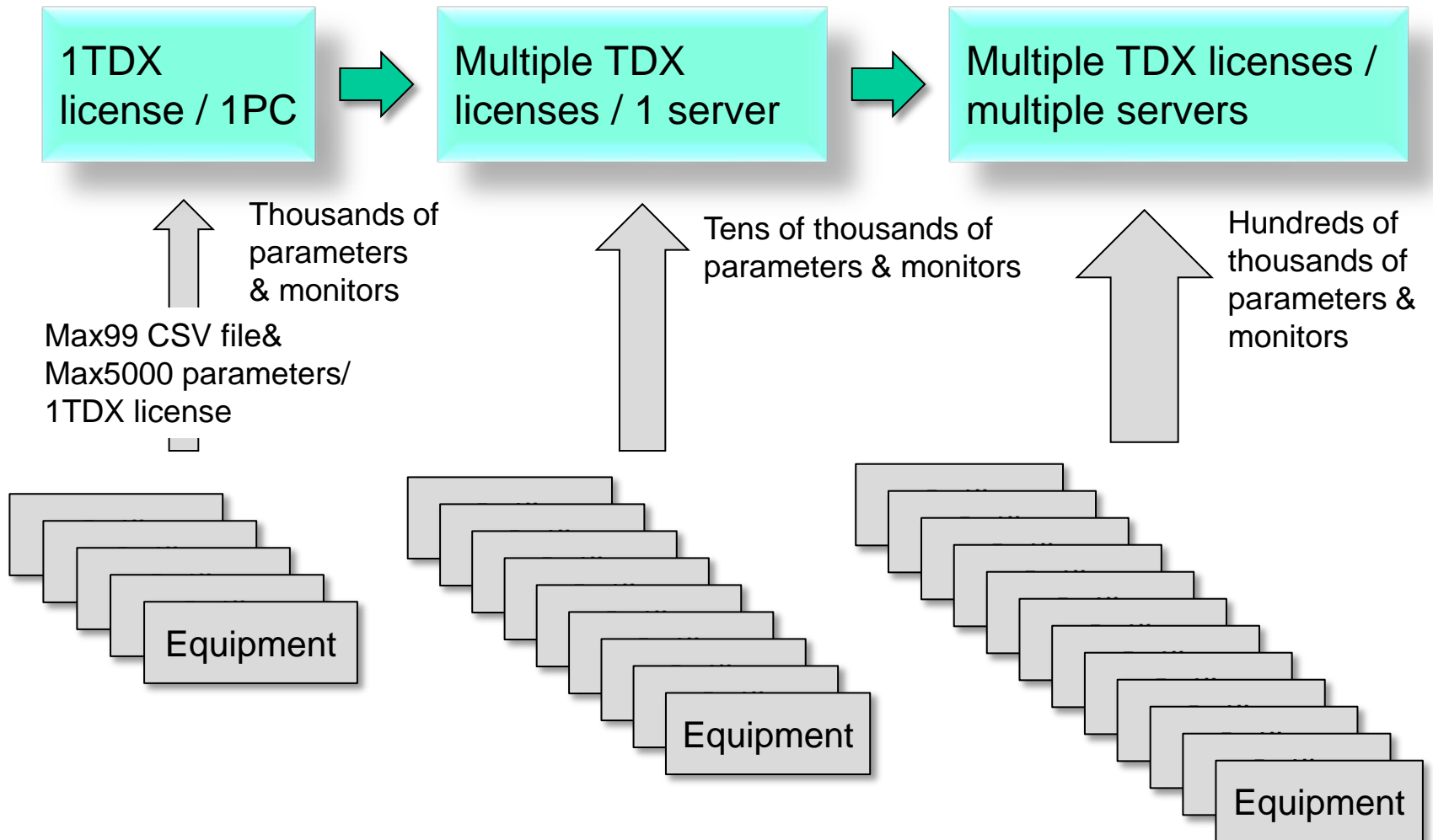


Image output of error display screen



System construction according to scale, from 1 to several thousand equipment



Monitoring Operation status monitor

CSV file input status monitoring:
Issuance of caution mail due to CSV file read load display and input timeout.

Monitoring module automatic start & restart:
Automatic restart when logging in, monitoring module automatically starting and stopping.

Disk usage monitoring:
Monitor drive utilization for monitoring and backup servers.

Monitoring delay status display:
Delay time display from CSV input time to monitoring end time and monitoring load status display.

